

BEDWELL SCHOOL

Bedwell
Primary
School,
Stevenage
SG1 1NJ



Nursery
& Reception
Prospectus,
2023-24





*"pupils feel
safe and secure
and enjoy their
learning"*

OFSTED, 2022

At Bedwell, we believe it is vitally important to give your child the best start possible in life. We offer a friendly and nurturing environment in which to learn and develop, and value every child as a unique individual with their own talents, interests and ideas.

Our Early Years setting offers children in Nursery and Reception a safe and happy place to learn about the world, about others and about themselves. We encourage children to become independent learners through a carefully balanced mix of child-led and adult-led experiences, constantly adapting our provision to match our children's needs and interests.

Early Years at Bedwell

Our staff are knowledgeable, experienced and committed to the school. Along with a raft of qualifications, our Early Years team possess a wealth of knowledge and a real understanding of (and passion for) our local area. We also benefit from specialist staff trained in providing Speech and Language, Special Needs and Counselling support.

Thank you for taking the time to learn more about our school, and do contact us if you have any questions - or better still, come and have a look around!

Our values

We believe that Early Years are a crucial stage in every child's development, when they build basic skills, learn to enjoy school, become familiar with routines and develop both independence and cooperation skills. As a result, we want all children at Bedwell to:

- become independent, self-motivated learners who enjoy being challenged
- show respect for themselves and others
- make progress through the curriculum
- build secure, stable relationships

"the incredible staff put every effort into making children happy"

RECEPTION
PARENT



Our ethos is built around a team of *Learning Superheroes*, who we meet in assemblies and lessons, and who embody our key values:

Claudia Curiosity likes nothing more than finding out new facts and discovering new things. She shows us how important it is to ask questions, explore new places and seek new experiences. **Eddy Empathy**, meanwhile, is everyone's friend! He's really good at understanding how other people feel and talking about their feelings.

Chloe Cooperation loves working with other people. She is convinced that everything is better if we work together - and she also knows how important it is to listen to your teammates. **Isaac Independence** is confident and full of brilliant ideas.

Polly Perseverance never, ever gives up! She loves taking on new challenges, and is convinced that you can do (almost) anything if you set your mind to it. Finally, **Ralph Reflectiveness** always wants to work out how something could be done better next time or tweaked to make improvements...

Learning Superheroes



Our learning environment

Our Early Years environment includes three spacious classrooms, a dedicated outdoor space and our forest school area, along with the hall, playground and field spaces we share with the rest of the school. As a result, we have space to really explore ideas, be creative and enjoy our learning - whether building towers that rise to the ceiling, constructing race tracks that span the room, or developing whole worlds for our favourite storybook characters to live in!

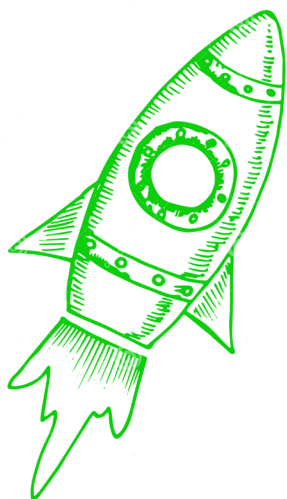
Our environment is also a space to celebrate our work and our community, and you'll find photos, books and toys reflecting the diversity of our children spread across our classrooms. Valuing these spaces also means treating them with respect, and at the start of the year our children learn to tidy up and organise resources, so that everything is ready to use again tomorrow!

Finally, the thing that makes our fantastic environment so effective is the team of staff who run it: both of our EYFS teachers have degrees in Early Years Education and draw on a wealth of practical experience, while our three teaching assistants bring with them passion, dedication and a great understanding of our community.

"pupils feel well cared for because staff go out of their way to help them"

OFSTED, 2022





Indoors, we have a wide range of exciting learning areas, including our curiosity corner, construction zone, art area, small world, malleable play and cosy reading spaces. Opportunities for maths and writing span all of these areas - meaning we can make the most of every learning opportunity that presents itself.


Our indoor space is constantly evolving, reflecting both our current topics and our children's interests. We strive to make our learning space feel safe and engaging for all our children, so you will find lots of our writing, artwork and pictures from home on our walls!

indoors

outdoors

We love to be outdoors! We have a large outdoor space, equipped with a mud kitchen, water area, investigation stations, sand pit and construction zone. Every child is provided with waterproofs and wellies, so we can stay dry (and hopefully keep our uniforms clean) whatever the weather!

We are also lucky enough to have our own forest area on site, along with two teachers trained in Forest School approaches. Forest School develops confidence and self-esteem through hands on experiences in a natural setting, and we take groups out to the forest every week.



*"we love to
hear our child's
fairytale-like
accounts of her
time at school"*

NURSERY
PARENT

Our curriculum

"I love maths because we get to learn and use lots of fun objects!"

EVAN,
RECEPTION

Playing, exploring, active discovery and critical thinking are all essential building blocks for igniting our children's enthusiasm for learning - and so these are the key ingredients that we want our children to experience every day. We believe in the power of learning through play, and so we provide our children with an ever-changing diet of activities that stimulate their interest - and then support them in taking their learning (and play) in whatever direction their imagination, creativity and curiosity takes them.

Each half-term, our learning and play revolves around a particular topic and a key story that we have chosen, such as Owl Babies, Jasper's Beanstalk, Whatever Next! and We're Going on a Bear Hunt. We learn these stories by heart, act them out, use them to stimulate discussions and vocabulary development - and eventually create our own versions, with children writing increasing amounts on their own.

We take part in phonics sessions every day, built around the Read Write Inc programme that we use across the school. We also take part in daily maths lessons, developing counting, ordering and number recognition.






*"the planning
of the early
years curriculum
is strong"*

OFSTED, 2022

Home links

We are committed to working together to give your child the best possible start to their school career, and so we work hard to build links between home and school.

We use Tapestry, a secure online learning journal, to record and share your child's progress. Parents are sent email invites, and once they have signed up they can view and comment on their child's learning, as well as posting photos and comments on things that they have done at home.



*"my daughter
loved showing me
around and talking
about all the things
that help her learn"*

RECEPTION
PARENT

We are keen to work in partnership with you to support your child's learning, and to give you the confidence to continue this learning at home. As a result, we run events across the year to show you what we've been doing in class, share useful strategies that you could use outside of school and celebrate achievements:

- Every half-term we run Stay & Play sessions, where parents can join their child in class, take part in fun activities together and explore our environment
- Parents evenings in the Autumn & Spring terms enable us to discuss your child's progress in depth - and teachers are also available for a quick chat every day
- Reading, phonics and maths workshops enable us to share the strategies and language we use in class, and suggest ideas you could try at home
- Christmas Craft sessions, Sports Days, World Book Day activities and whole-school events give us the chance to come together as a community and celebrate our talents and achievements

Partners in learning

*"98% of
parents said that
their child is happy
at the school"*

PARENT SURVEY.
OCTOBER 2022



Getting out and about

"a strong commitment to supporting wellbeing and personal development"

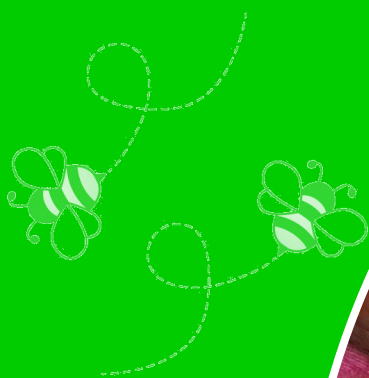
OFSTED, 2022

We believe that trips and visits can play a huge role in learning, as they help to turn words and pictures on a page into something real and memorable. We also recognise that many of our children would not otherwise visit farms, travel to the seaside or meet zoo animals first hand, so we want to make sure that we enable everyone to access to all these fantastic experiences.

In addition to regular visits to our local area, we aim to go out of Stevenage at least once a term, visiting zoos, farms, theatres, animal sanctuaries and historic places. These sites are carefully selected to tie-in with the topics and stories we have been learning about in class - and we always work hard to keep costs down, to ensure that these activities are accessible to everyone.

Onsite, we get outside every day, making the most of our outdoor area and forest school environment. During the year we are visited by chicks and ducklings (which we watch hatch and grow in class), authors and experts, who support and inspire our learning. We also celebrate Black History Month, Chinese New Year, Diwali, Christmas, Eid and other national and local events that are important to members of our class and school community.





Back in school, we use experiences from trips to support learning across the curriculum. Discussions and descriptions suddenly come to life when they have first hand experiences to build on, and our children grow in confidence and independence as a result.

Lastly, wherever we go and whatever we do, we make sure we stay safe. Our staff are paediatric first aid trained, and have extensive experience of supporting children with medical conditions and meeting the needs of every child.

"I loved feeding the baby lambs. They were really cute and friendly!"

LUCY,
RECEPTION

Your questions answered...

How old should my child be to start school?

Children start Nursery in the September after their 3rd birthday, and then move up to start Reception in the September after their 4th birthday.

When are you open?

Our school day starts at 8.50am. Morning sessions in Nursery finish at 11.50 (additional hours are also available - see below). Reception days finish at 3.10pm.

What does it cost?

All Nursery children are entitled to 15 hours of funded education, which covers our morning sessions. Working parents may also be entitled to an additional 15 hours of free childcare, which means these children can stay for full school days. Check out the government website for more details: www.childcarechoices.gov.uk

Once your child starts Reception, full-time education is free for all children.

Do children have to wear uniform?

Yes - we believe that this helps to make all the children here feel part of a school community. More information can be found on our website: www.bedwell.herts.sch.uk

*"97% of
parents said they
would recommend
the school"*

PARENT SURVEY.
OCTOBER 2022





Do you provide school dinners?

All children in Reception are entitled to free school dinners, selecting from four options each day - a hot meal, a vegetarian option, a jacket potato or a school packed lunch. Children who are staying for afternoon sessions in Nursery can choose to buy a school dinner, or bring in their own lunch.

How can I get in contact?

- Email us at admin@bedwell.herts.sch.uk
- Call us on **01438 351198**
- Via our website www.bedwell.herts.sch.uk
- Arrange a visit and meet our fantastic team - we'd love to show you around!

Applying for places

Nursery

Applications for Nursery places (either to start immediately or in September 2024) need to be made directly to the school.

Application forms are available from the school office or on our website at:

www.bedwell.herts.sch.uk/admissions.html

Reception

Applications for places in Reception (either starting immediately or in September 2024) are managed through Herts County Council.

Head to their website to find out more:

www.hertfordshire.gov.uk/services/schools-and-education/

*"early readers
learn sounds
quickly and are
soon able to blend
and spell words"*

OFSTED, 2022

Why choose Bedwell?

dedicated staff with over 80 years combined experience in Early Years

a fantastic, well-resourced environment, both indoors and outdoors

commitment to building links with home and keeping parents informed

incredibly positive feedback from parents - 97% would recommend us!

a packed year, with regular trips, Stay & Play sessions and whole-school events

dedicated speech and language support staff



Contact us:

admin@bedwell.herts.sch.uk

www.bedwell.herts.sch.uk

01438 351198

*"rated GOOD
in all areas...
Pupils are proud to
attend the school"*

OFSTED, 2022

Early Years Prospectus
© Bedwell School 2023