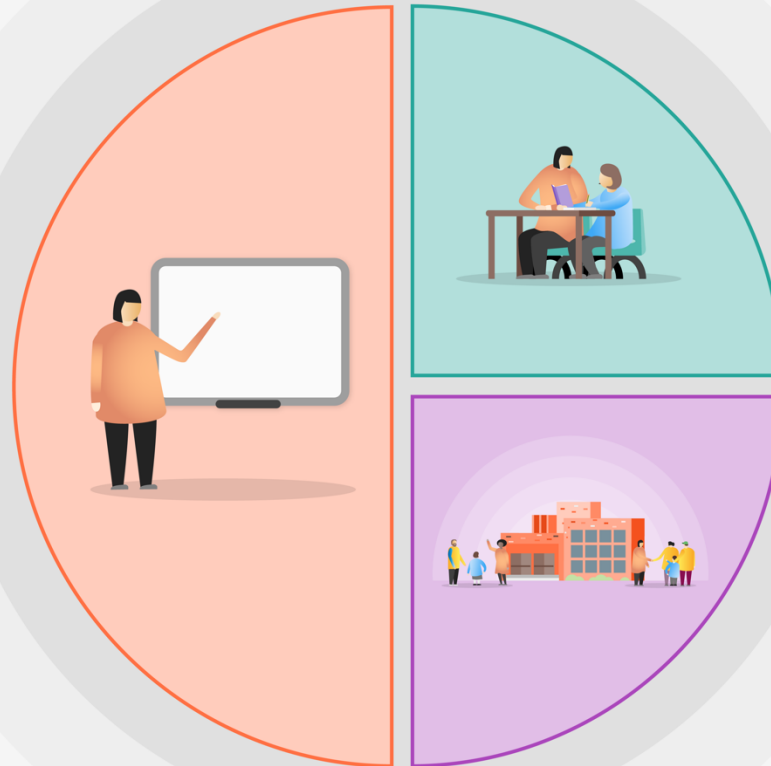


## 1 Teaching

- ❖ Phonics - RWInc used consistently, leader release, monitoring, coaching, additional 1:1 sessions
- ❖ Reading - consistent strategies, promoting reading culture, emphasis on vocabulary acquisition (Word of the Day etc)
- ❖ Maths - use of Essentials, reasoning based teaching, consistent models, CPD for teachers & TAs
- ❖ Writing - securing sentence structure
- ❖ Developing intent & subject specific skills and knowledge teaching in foundation subjects



## 2 Targeted academic support

- ❖ Maths spot catch-up
- ❖ RWInc interventions
- ❖ ReadIt2
- ❖ Speech & Language
- ❖ Maths & reading booster after school in Y6
- ❖ Holiday projects with HA

## 3 Wider strategies

- ❖ Breakfast Club
- ❖ Counselling
- ❖ Family Support Worker
- ❖ Pastoral Programmes
- ❖ Sensory Circuits
- ❖ Lunchtime & Homework Clubs
- ❖ Subsidised trips